

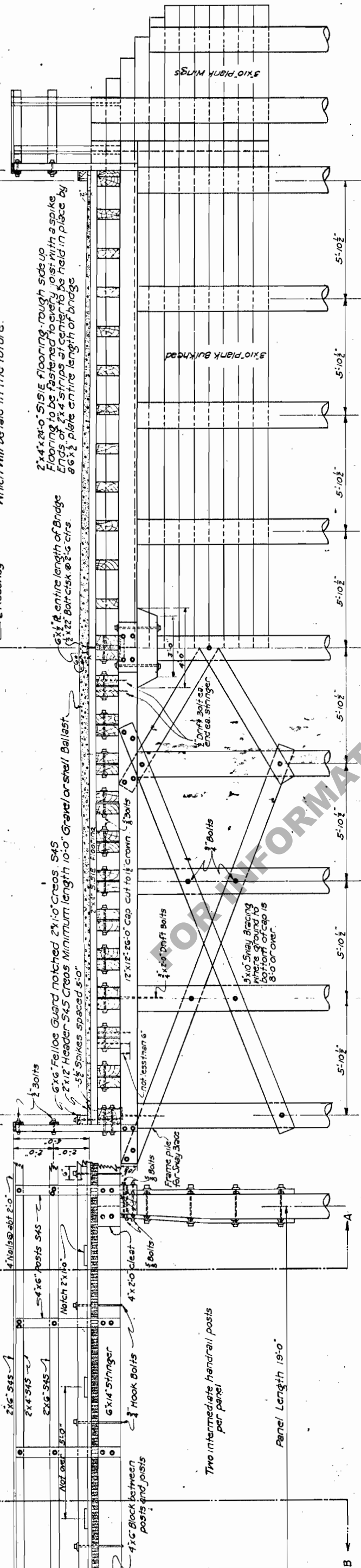
47'-0" Clear Roadway

Gravel or Shell thickness compacted measurement

Notes: Gravel or Shell Ballast is to be temporary deck having been designed for 2" Asphalt Surfacing, which will be laid in the future.

6"x6" Fellow Guard notched 2"x10" Creos S4S  
2"x12" Header S4S Creos Minimum length 10'-0" Gravel or shell Ballast  
5/8" Spikes spaced 5'-0"

2"x4"x24"x0" S1S1E flooring rough sds up  
Flooring to be fastened to every post with a spike  
Ends of 2"x4" strips at center to be held in place by  
86% 1/2" plate entire length of bridge

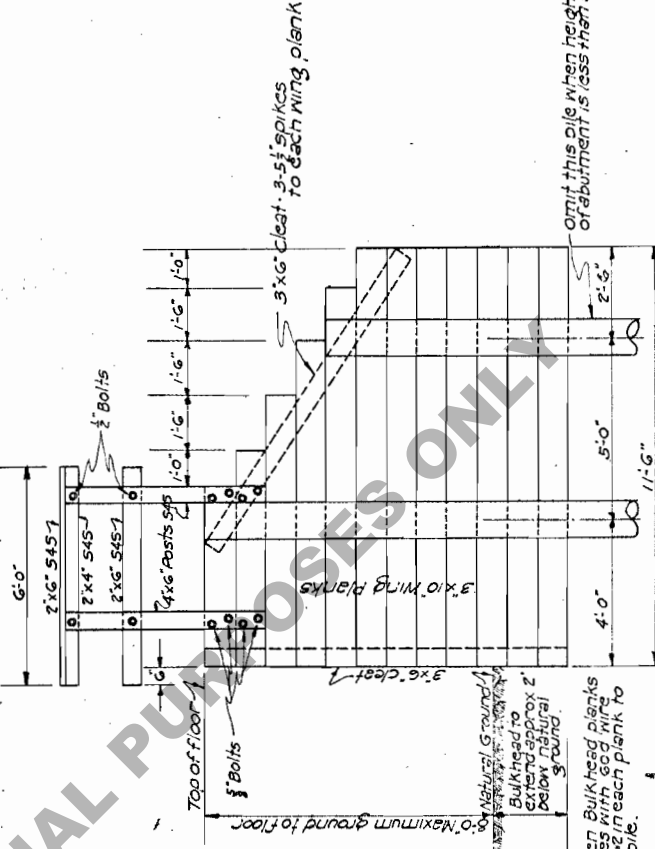


PART ELEVATION

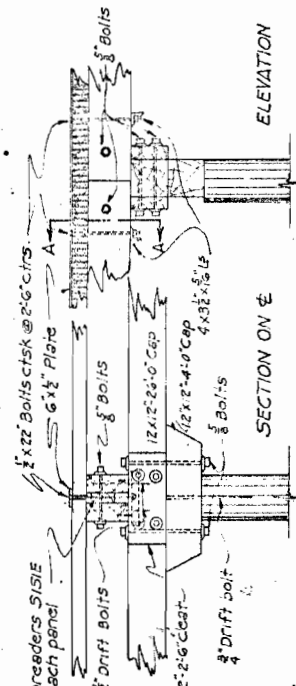
HALF SECTION A-A

HALF SECTION B-B

Note: Posts to have full bearing on caps except outside lines and two center lines which are to be bolted. Leaped joints separated 1/2"



DETAIL OF WING NORMAL TO FACE



DETAILS OF CENTER CONNECTION

**SWAY BRACING**

Ground to Cap Top	No. of Pcs.	Length	Lumber F.B.M.	Boils Lbs
6'-10"	4	22'-0"	220	140
	2	16'-0"	80	

**DIMENSIONS & QUANTITIES - SUPERSTRUCTURE**

Panel Size	One Panel Complete	Hard. Lumber	Untr. Lumber	Cross Lumber	Hard. Lumber	Boils
19'-0" x 14'	203	9962	1186	613	179	9075
						1079
						631

10 TON CAPACITY

**General Notes**

Specifications - LOUISIANA HIGHWAY COMMISSION. Sept 1925  
All piles to be straight sound trees, peeled and creosoted.  
All timbers except hand rail and hand rail posts to be dense and creosoted. All 2"x4" floor strips to be S1S1E rough sds up. Complete permanent records of each structure as built. Shall be kept showing pile lengths, penetrations, pile driving data and any modifications of this design.  
Washers on 3/4" and 1/2" bolts to be Cast iron D.G. type and cutnought iron on 1/2" bolts.

**PART PLAN**

**ONE BULKHEAD INCLUDING WINGS**

Ground to Grade	No. of Panels	Creos F.B.M.	Hard. Lumber Lbs
1	3	522	70
2	5	905	81
3	6	1115	86
4	7	1311	90
5	8	1518	94
6	10	1898	101
7	11	2105	105
8	12	2295	108
			80 F.B.M.

18"x18" Galvanized sheet metal  
20 gauge placed over all piling and  
bolted down as shown by dotted line.

DETAIL OF SHEET METAL  
OVER TOPS OF ALL PILES

Revised June 11, 1928

Submitted: *[Signature]* February 1928

LOUISIANA HIGHWAY COMMISSION  
BATON ROUGE, LA.

**STANDARD**  
TIMBER TRESTLE WITH BALLAST DECK  
47'-0" ROADWAY  
19'-0" SPAN

(B-2173) T-7-40